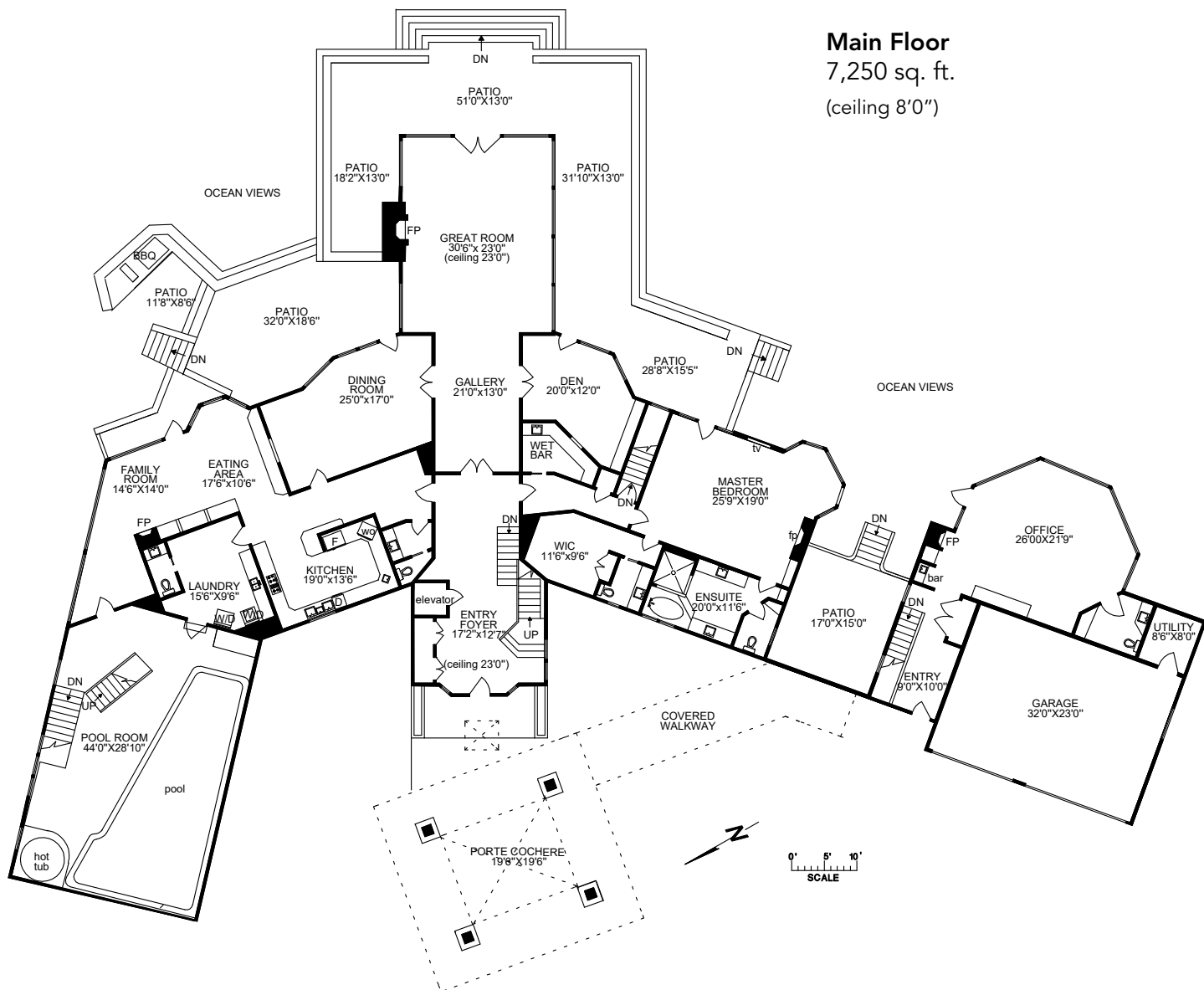




6 Bedrooms | 9 Bathrooms | 15,400 sq. ft. | 2.5 acres

**\$13,888,000.00 CDN**  
\$10,397,972 US (as of March 5, 2019)



**Main Floor**  
7,250 sq. ft.  
(ceiling 8'0")

**The Sweet Pea Estate**

3195 Humber Rd., Victoria BC

Please contact Kevin Sing to schedule your private appointment.

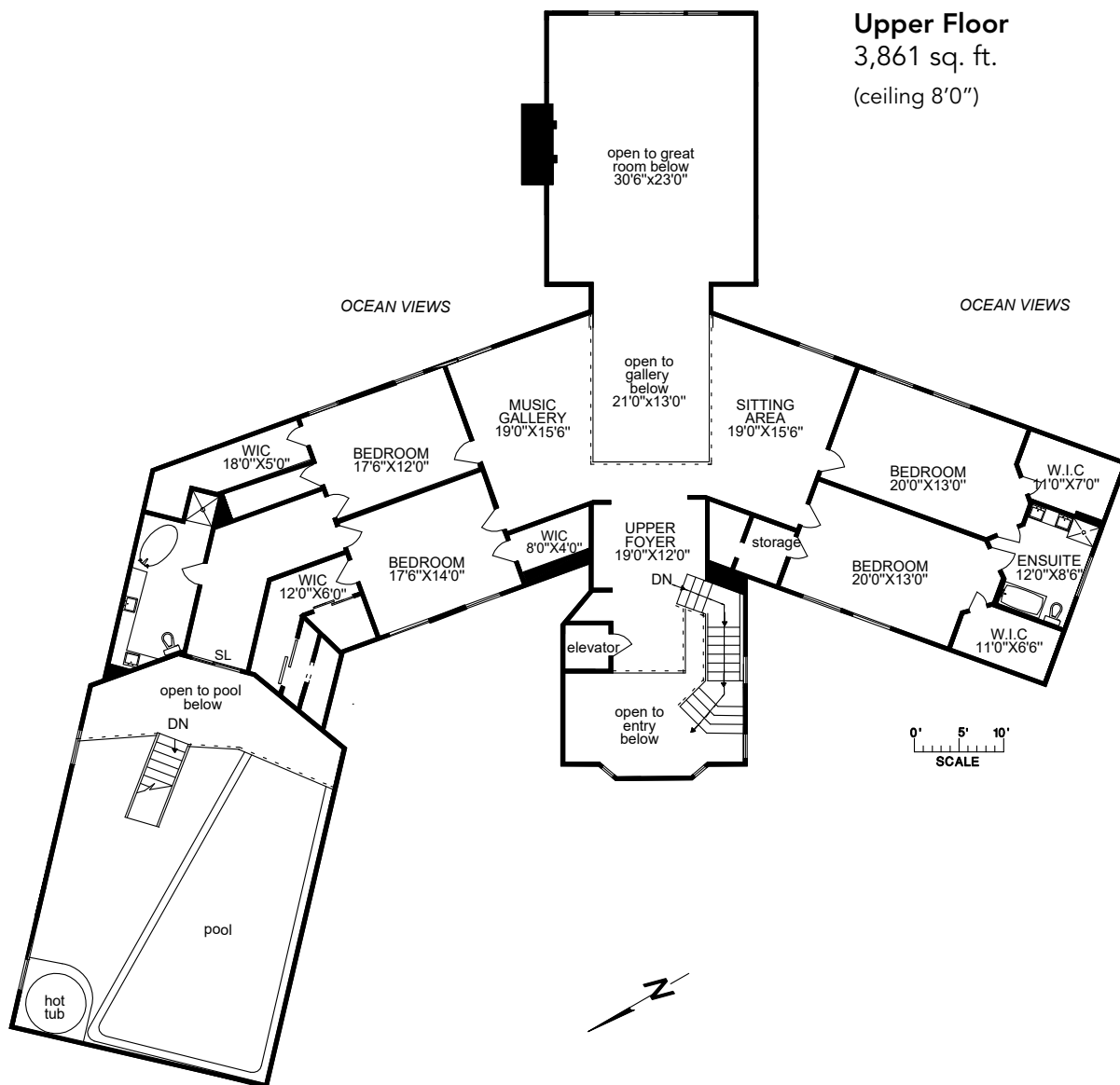
250.477.7291 • [ksing@kevinsing.com](mailto:ksing@kevinsing.com)  
[www.victoriawaterfrontestate.com](http://www.victoriawaterfrontestate.com)





6 Bedrooms | 9 Bathrooms | 15,400 sq. ft. | 2.5 acres

**\$13,888,000.00 CDN**  
\$10,397,972 US (as of March 5, 2019)



**Upper Floor**  
3,861 sq. ft.  
(ceiling 8'0")

### The Sweet Pea Estate

3195 Humber Rd., Victoria BC

Please contact Kevin Sing to schedule your private appointment.

250.477.7291 • [ksing@kevinsing.com](mailto:ksing@kevinsing.com)  
[www.victoriawaterfrontestate.com](http://www.victoriawaterfrontestate.com)

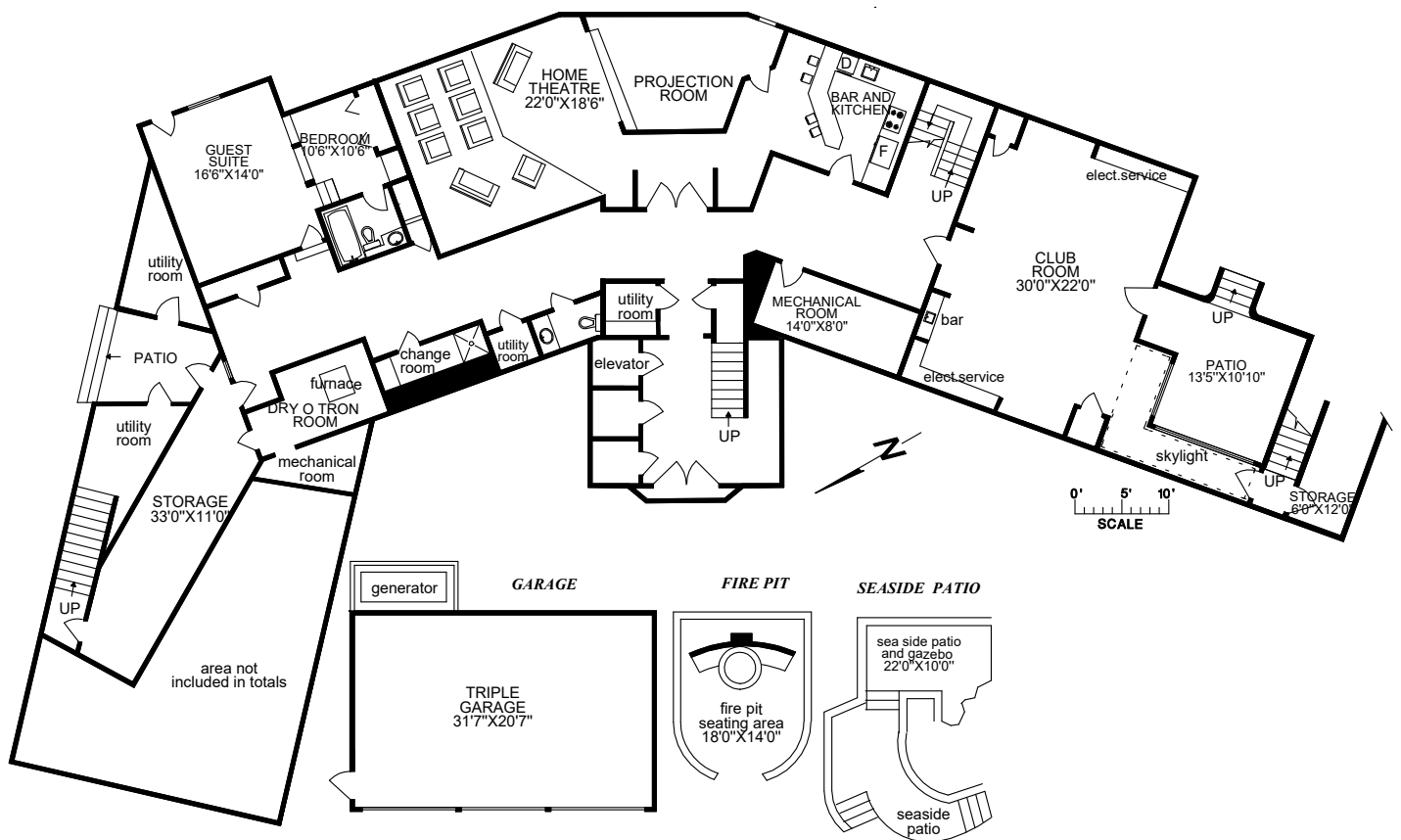




6 Bedrooms | 9 Bathrooms | 15,400 sq. ft. | 2.5 acres

**\$13,888,000.00 CDN**  
\$10,397,972 US (as of March 5, 2019)

**Lower Floor**  
4,740 sq. ft.  
(ceiling 8'0")



**The Sweet Pea Estate**

3195 Humber Rd., Victoria BC

Please contact Kevin Sing to schedule your private appointment.

250.477.7291 • [ksing@kevinsing.com](mailto:ksing@kevinsing.com)  
[www.victoriawaterfrontestate.com](http://www.victoriawaterfrontestate.com)

